

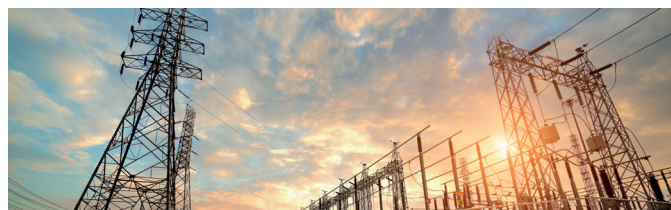
PICU-1000 1000 VA PRIMARY INJECTION TEST SYSTEM



PICU-1000 is designed using advanced engineering technology to inject current up to 1000A. PICU-1000 is applicable on current transformers, shunt or wherever high current injection is in need of up to 1000 VA power. PICU is a fully automatic primary injection instrument with the capability of CT Turns Ratio Testing in addition to MCCB Timing tests. 4.3" TFT touch display shows all measurement results on a single screen. With a USB, users can record/ store measurement results. If setting up a Laptop or PC for the field test is difficult, users can record data to the device's internal memory or an external USB flash memory. Multi-language capability and user-friendly operation menu make it easy to control, even by less trained staff. It is a light, compact and rugged device with the protection class IP67 (case closed).

FEATURES

- MCCB Timing Tests, CT Turns Ratio
- High Output Power
- Frequency-selectable
- Fully Automatic
- 4.3-inch TFT touch colour Display
- PC Software (reporting)
- Internal Memory (Additional External Memory also available)
- Compact and Light-weight



TECHNICAL SPECIFICATIONS

Measurement Parameters	MCCB Timing Tests, CT Turns Ratio
Output Current	Up to 1000 A
Maximum Output Power	1000 VA
Output Frequency	40-70 Hz
Power Supply	100-240 V 47/63 Hz
Memory	Up to 100 records, Unlimited Storage using an external USB
Communication	USB 2.0/1.1 Standard-A, USB 2.0/1.1 Standard-B
PC Software	DMP Software (reporting)
Display	4.3-inch colour touch display
Dimensions	(16.7 × 13.4 × 6.8)" (424 x 340 x 173) mm
Weight	9 kg (device), 15 kg (Current Source)
Working Temperature	-10 °C to + 60 °C
Storage Temperature	-30 °C to + 70 °C
Humidity	95% RH Non-condensing
Protection Class	IP67 (case closed)
Included in the package	Power Cable, Ground Cable , 4x 2.3m (95mm ²) Measurement Cable Set, 1 KVA Current Source, Booster Cable (between PICU & Transformer Source), 2x2.5mm ² Contact Cables, USB Cable, USB flash drive, Instruction Manual (Soft Copy), DMP Software, Cable Bag
Options	Hard carry case

Specifications are valid at/under 25 °C temperature. *Content subject to change without notice.